



Rab 34 Polyclonal Antibody

Catalog No	YP-Ab-16198
Isotype	IgG
Reactivity	Human;Rat;Mouse;
Applications	WB;IHC;IF;ELISA
Gene Name	RAB34
Protein Name	Ras-related protein Rab-34
Immunogen	The antiserum was produced against synthesized peptide derived from human RAB34. AA range:206-255
Specificity	Rab 34 Polyclonal Antibody detects endogenous levels of Rab 34 protein.
Formulation	Liquid in PBS containing 50% glycerol, 0.5% BSA and 0.02% sodium azide.
Source	Polyclonal, Rabbit,IgG
Purification	The antibody was affinity-purified from rabbit antiserum by affinity-chromatography using epitope-specific immunogen.
Dilution	WB: 1/500 - 1/2000.IHC-p 1:50-200 ELISA: 1/5000.. IF 1:50-200
Concentration	1 mg/ml
Purity	≥90%
Storage Stability	-20°C/1 year
Synonyms	RAB34; RAB39; RAH; Ras-related protein Rab-34; Ras-related protein Rab-39; Ras-related protein Rah
Observed Band	29kD
Cell Pathway	Cytoplasm . Golgi apparatus . Cytoplasmic vesicle, phagosome . Cytoplasmic vesicle, phagosome membrane ; Lipid-anchor ; Cytoplasmic side . Cell projection, cilium . Recruited to phagosomes containing S.aureus or M.tuberculosis (PubMed:21255211). .
Tissue Specificity	Brain,Embryo,Heart,Mammary gland,Pancreas,Skeletal muscle,
Function	function:Protein transport. Involved in the redistribution of lysosomes to the peri-Golgi region.,similarity:Belongs to the small GTPase superfamily. Rab family.,subcellular location:Associates with the Golgi complex.,subunit:Interacts with RILP.,
Background	This gene encodes a protein belonging to the RAB family of proteins, which are small GTPases involved in protein transport. This family member is a Golgi-bound member of the secretory pathway that is involved in the repositioning of lysosomes and the activation of macropinocytosis. Alternative splicing of this gene results in multiple transcript variants. This gene overlaps and shares exon structure with the nine-amino acid residue-repeats (NARR) gene, which encodes a functionally distinct nucleolar protein from a different reading frame. [provided by



RefSeq, Jan 2012],

matters needing attention

Avoid repeated freezing and thawing!

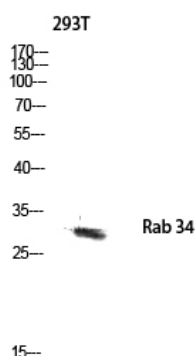
Usage suggestions

This product can be used in immunological reaction related experiments. For more information, please consult technical personnel.

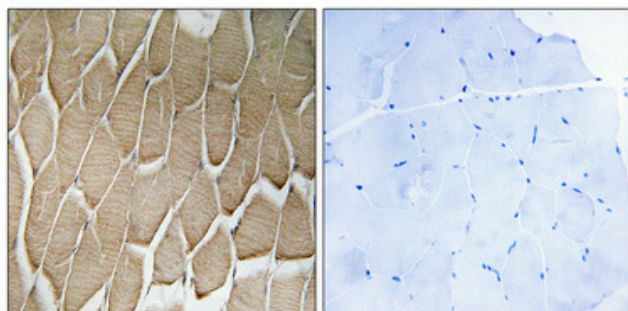
Products Images



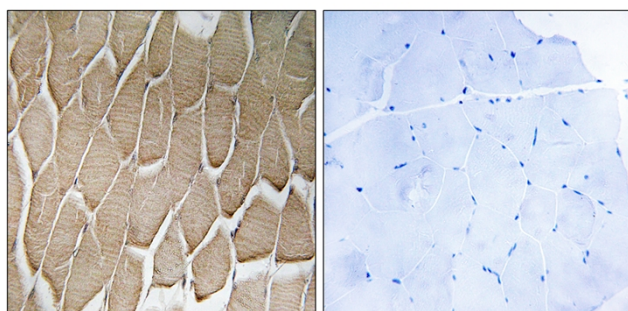
Western Blot analysis of various cells using Rab 34 Polyclonal Antibody diluted at 1:500



Western blot analysis of 293T lysis using Rab 34 antibody. Antibody was diluted at 1:500



Immunohistochemical analysis of paraffin-embedded Human skeletal muscle. Antibody was diluted at 1:100(4° overnight). High-pressure and temperature Tris-EDTA,pH8.0 was used for antigen retrieval. Negative ctrl (right) obtained from antibody was pre-absorbed by immunogen peptide.



Immunohistochemistry analysis of paraffin-embedded human skeletal muscle, using RAB34 Antibody. The picture on the right is blocked with the synthesized peptide.